



Government of India
Ministry of Earth Sciences
India Meteorological Department



Press Release
Date: 01st August, 2025
Time of Issue: 1315 hours IST

Subject: i) Heavy to very heavy rainfall likely to continue over Northeast & adjoining East India during next 7 days with extremely heavy falls over Sub-Himalayan West Bengal & Sikkim, Meghalaya on 02nd & 03rd and Arunachal Pradesh & Bihar on 03rd August, 2025.
ii) Heavy to very heavy rainfall likely over Tamil Nadu, Kerala during next 6-7 days.
iii) Subdued rainfall activities likely over central & north peninsular India during next 6-7 days.

Realised weather during past 24 hours till 0830 hours IST of today, the 01st August, 2025:

- ❖ **Heavy to very heavy rainfall (7-20 cm)** has been recorded at isolated places over Rajasthan, Haryana, Bihar, Himachal Pradesh, Meghalaya; **Heavy rainfall (7-11 cm)** at isolated places over Sub-Himalayan West Bengal, Jharkhand, Uttarakhand, Punjab, West Uttar Pradesh and Madhya Maharashtra.
- For more details of realised weather, kindly refer [Annexure I](#).**

i. Weather Systems, Forecast and Warnings (refer to [Annexure II & III](#)):

- ❖ The monsoon trough at mean sea level runs north of its normal position.
- ❖ An **upper air cyclonic circulation** lies over East Uttar Pradesh and another over Haryana & neighbourhood in lower tropospheric levels.
- ❖ An upper air cyclonic circulation lies over Sub-Himalayan West Bengal & Sikkim & neighbourhood in middle & upper tropospheric levels tilting southwestwards with height.
- ❖ A Western Disturbance as a trough in middle & upper tropospheric levels runs roughly along Long. 72°E to the north of Lat. 32°N.

Under the influence of these systems, the following weather is likely:

Northeast India:

- ❖ **Extremely heavy rainfall** very likely at isolated places over Meghalaya on 02nd & 03rd; Arunachal Pradesh on 03rd August.
- ❖ Light/moderate rainfall at many places accompanied with thunderstorm, lightning and isolated **heavy rainfall** likely to continue over Arunachal Pradesh, Assam & Meghalaya and Nagaland, Manipur, Mizoram & Tripura during 01st-07th August with isolated **very heavy rainfall** over Arunachal Pradesh during 02nd-07th August; Assam & Meghalaya during 01st-04th August.

East & Central India:

- ❖ **Extremely heavy rainfall** very likely at isolated places over Sub-Himalayan West Bengal & Sikkim on 02nd & 03rd and Bihar on 03rd August.
- ❖ Isolated **heavy rainfall** likely over Sub-Himalayan West Bengal & Sikkim during 01st-07th; Gangetic West Bengal on 01st & 07th; Jharkhand on 01st & 02nd; Bihar during 01st-05th; Chhattisgarh on 01st & 02nd August; West Madhya Pradesh during 03rd-05th; East Madhya Pradesh on 03rd & 04th August with isolated **very heavy rainfall** over Sub-Himalayan West Bengal & Sikkim during 02nd-04th; West Madhya Pradesh on 04th & 05th; Bihar during 01st-03rd August.
- ❖ Light to moderate rainfall at most/many places accompanied with thunderstorm & lightning likely over the region during next 5 days.

Northwest India:

- ❖ Isolated **heavy rainfall** likely over Jammu-Kashmir during 04th-06th August; Himachal Pradesh, Haryana during 01st-05th; Uttarakhand during 01st-07th; Punjab 01st, on 03rd & 04th; Uttar Pradesh during 01st-05th; West Rajasthan on 01st; East Rajasthan during 03rd-07th August with **very heavy rainfall** over Himachal Pradesh on 01st; East Rajasthan, West Uttar Pradesh on 04th; East Uttar Pradesh and Uttarakhand on 03rd & 04th August.
- ❖ Light/moderate rainfall at many places accompanied with thunderstorm & lightning likely over Western Himalayan region and many/some places over the plains during next 7 days.

South Peninsular India:

- ❖ Isolated **heavy rainfall** likely over Tamil Nadu during 01st-07th; Kerala & Mahe during 02nd-06th; Coastal & South Interior Karnataka, Coastal Andhra Pradesh and Rayalaseema during 05th-07th August with very heavy rainfall over Tamil Nadu during 03rd-05th and Kerala & Mahe on 06th & 07th August.
- ❖ Strong surface winds (speed reaching 40-50 kmph) very likely over South Peninsular India during next 5 days.
- ❖ Light to moderate rainfall at some/many places over Kerala & Mahe, Lakshadweep, Karnataka, Rayalaseema, Coastal Andhra Pradesh & Yanam and Telangana during next 7 days.

West India:

- ❖ Light to moderate rainfall at many/some places very likely over the region during next 6-7 days.

Fishermen warning:

Fishermen are advised to avoid venturing into the following from 01st August to 06th August 2025 to the following Areas:

Arabian Sea: Along and off Gujarat coast and adjoining sea areas; Kerala & Karnataka coast and adjoining sea areas during 04th August to 06th August; some parts of southeast Arabian Sea for 01st, 2nd & 4th August, many parts of southeast Arabian Sea for 05th August; few parts of southeast Arabian Sea for 3rd August; many parts of southwest Arabian Sea during 01st August to 06th August; most parts of central Arabian Sea; southern parts of north Arabian Sea; Along and off the Somalia coast and adjoining sea areas, south Oman and adjoining Yemen coast & adjoining sea areas during 01st August to 06th August.

Bay of Bengal: Some parts of southwest Bay of Bengal during 01st August to 06th August; few parts of southeast Bay of Bengal for 4th August. Over Lakshadweep area during 01st to 03rd August. Over Gulf of Mannar & Comorin area for 01st-05th August.

ii. Weather conditions and forecast over Delhi/NCR during 01st to 04th August, 2025 (Annexure IV)

For more details, kindly refer National Weather Bulletin:

https://mausam.imd.gov.in/responsive/all_india_forecast_bulletin.php

For District wise warnings refer: <https://mausam.imd.gov.in/responsive/districtWiseWarningGIS.php>

Rainfall recorded (in cm) during past 24 hours till 0830 hours IST of today, the 01st August:

West Rajasthan: Taranagar/reni (dist Churu) 18; Nohar SR (dist Hanumangarh) 14; Sadulsahar SR (dist Sri Ganganagar), Anupgarh Tehsil SR (dist Sri Ganganagar) 12 Each; Srivijaynagar SR (dist Sri Ganganagar), Sriganganagar Tehsil SR (dist Sri Ganganagar) 10 Each; Suratgarh (dist Sri Ganganagar) 9; Tibi SR (dist Hanumangarh) 8; Hanumangarh (dist Hanumangarh), Churu Tehsil SR (dist Churu) 7 Each;

Bihar: Pandarak (dist Patna) 13; Katoria (dist Banka), Sarmera (dist Nalanda) 9 Each; Bausi (dist Banka) 8; Tarapur (dist Monghyr), Shambhuganj (dist Banka) 7 Each;

East Rajasthan: Ramgarhshekhatan SR (dist Sikar), Sarmathura SR (dist Dholpur) 12 Each;

Himachal Pradesh: Chuari (dist Chamba) 12;

Assam & Meghalaya: Mawsynram (dist East Khasi Hills) 12; Cherrapunji(rkm) (dist East Khasi Hills) 9; Cherrapunji (dist East Khasi Hills), N.lakhimpur/Lilabari (dist Lakhimpur) 8 Each;

West Uttar Pradesh: Hathras (dist Hathras) 11; Chakkar Nagar (dist Etawah) 9; Etah (dist Etah), Karhal (dist Mainpuri) 8 Each; Khekda (dist Baghpat), Sasani (dist Hathras) 7 Each;

Punjab: Phangota (dist Pathankot) 10; Kotla (dist Rupnagar) 8; Shahpur Kandi (dist Pathankot) 7;

Jharkhand: Purvi Tundi (dist Dhanbad) 10; Putki (dist Dhanbad) 9; Nandadih (dist Giridih) 8;

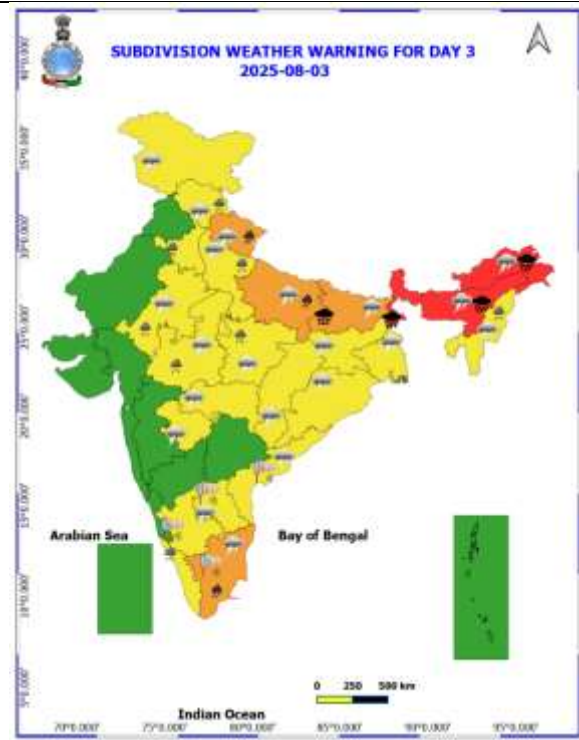
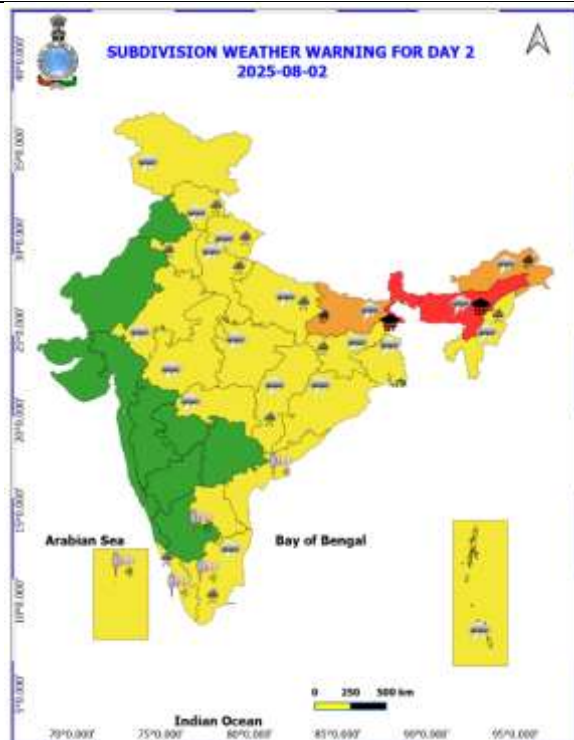
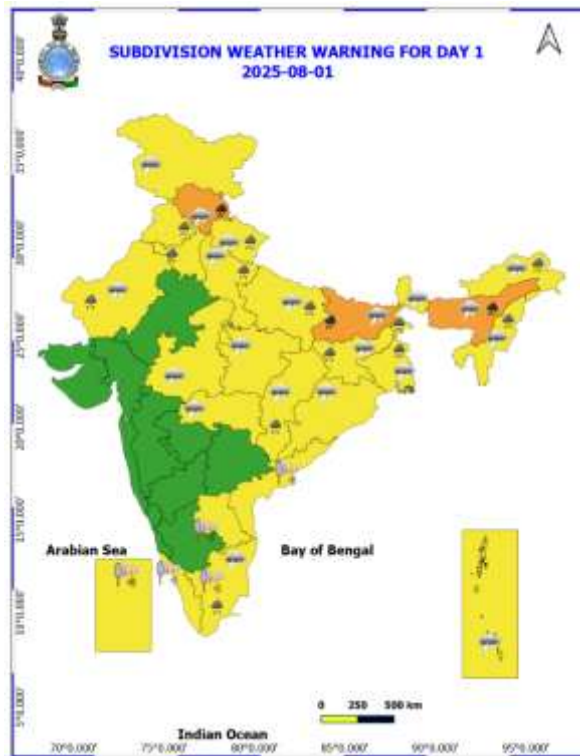
Haryana: Ujha Panipat AWS (dist Panipat), Gohana (dist Sonapat), Farukhnagar (dist Gurgaon) 9 Each; Kharkoda (dist Sonapat), Rohtak (dist Rohtak), Palam (dist New Delhi) 8 Each; Mohna (dist Faridabad), Dhansa (dist South West Delhi), Gurgaon REV (dist Gurgaon), Badli REV (dist Jhajjar), Jhajjar AWS (dist Jhajjar) 7 Each;

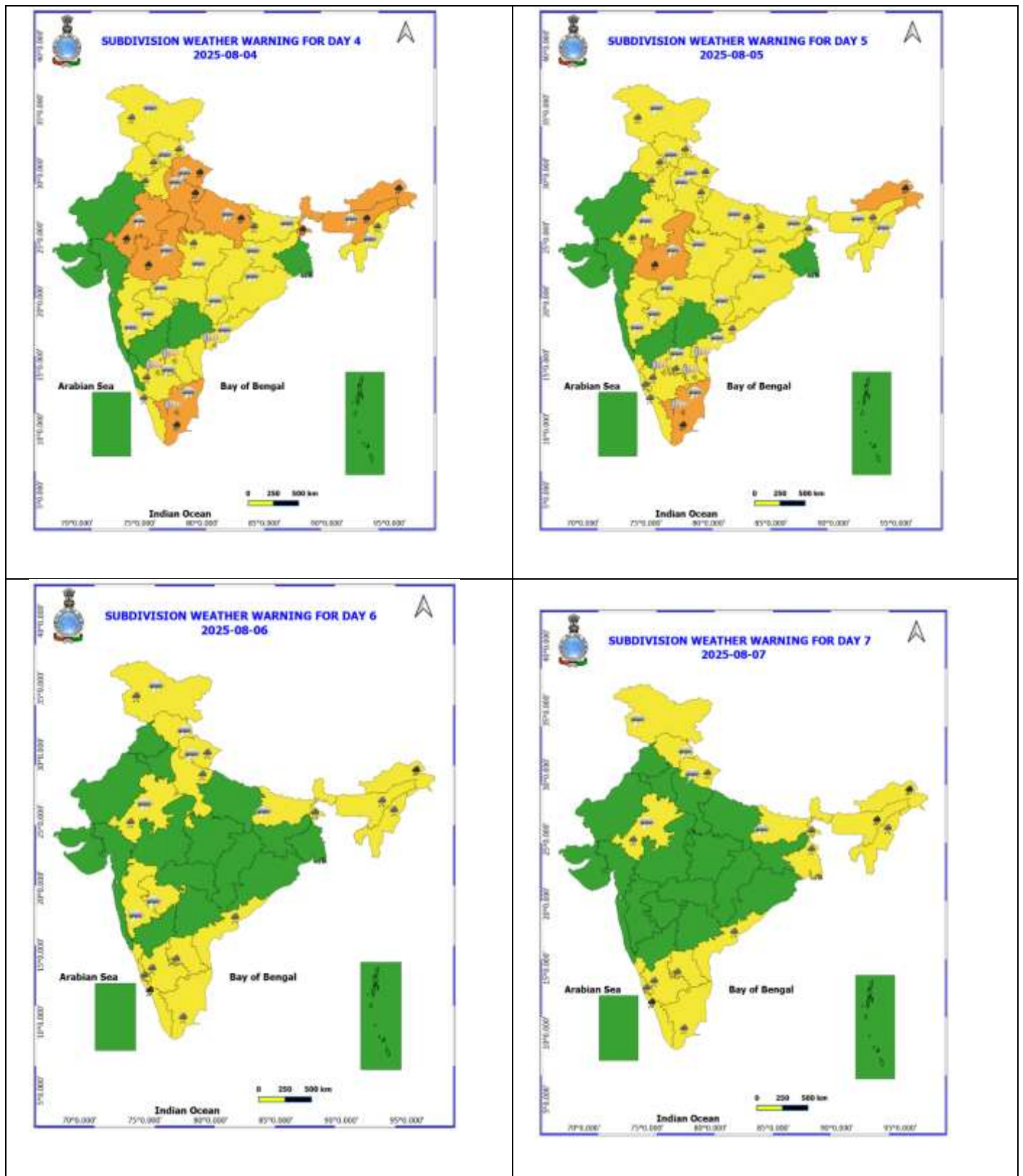
Uttarakhand: Narendranagar (dist Garhwal Tehri) 8; Uttar Kashi (CWC) (dist Uttarkashi), Uttar Kashi (dist Uttarkashi) 7 Each;

Sub Himalayan West Bengal & Sikkim: Nagarkata (dist Jalpaiguri) 8.

Table-1								
7 Days Rainfall Forecast								
S.No.	Subdivision	1- Aug	2- Aug	3- Aug	4- Aug	5- Aug	6- Aug	7- Aug
		Day 1	Day 2	Day 3	Day 4	Day 5	Day 6	Day 7
1	ANDAMAN & NICOBAR ISLANDS	SCT	SCT	SCT	SCT	FWS	FWS	FWS
2	ARUNACHAL PRADESH	FWS	WS	WS	WS	FWS	FWS	WS
3	ASSAM & MEHGHALAYA	FWS	WS	WS	WS	WS	WS	WS
4	NAGALAND, MANIPUR, MIZORAM AND TRIPURA	FWS	FWS	FWS	FWS	FWS	WS	WS
5	SUB HIMALAYAN WEST BENGAL & SIKKIM	WS	WS	WS	WS	WS	WS	WS
6	GANGETIC WEST BENGAL	WS	FWS	FWS	FWS	FWS	FWS	WS
7	ODISHA	SCT	SCT	ISOL	ISOL	ISOL	SCT	SCT
8	JHARKHAND	FWS	FWS	FWS	FWS	FWS	FWS	FWS
9	BIHAR	FWS	WS	WS	FWS	SCT	SCT	FWS
10	EAST UTTAR PRADESH	ISOL	SCT	FWS	FWS	SCT	SCT	SCT
11	WEST UTTAR PRADESH	SCT	SCT	SCT	FWS	FWS	SCT	SCT
12	UTTARAKHAND	WS	WS	FWS	WS	WS	FWS	FWS
13	HARYANA, CHANDIGARH & DELHI	FWS	FWS	FWS	FWS	FWS	SCT	SCT
14	PUNJAB	FWS	SCT	SCT	FWS	FWS	SCT	SCT
15	HIMACHAL PRADESH	WS	FWS	FWS	WS	WS	FWS	FWS
16	JAMMU AND KASHMIR AND LADAKH	SCT	SCT	SCT	SCT	WS	FWS	SCT
17	WEST RAJASTHAN	SCT	ISOL	ISOL	ISOL	ISOL	ISOL	ISOL
18	EAST RAJASTHAN	FWS	SCT	SCT	FWS	FWS	SCT	SCT
19	WEST MADHYA PRADESH	SCT	SCT	FWS	FWS	SCT	SCT	SCT
20	EAST MADHYA PRADESH	SCT	FWS	FWS	FWS	SCT	SCT	SCT
21	GUJRAT REGION	SCT	SCT	SCT	SCT	SCT	SCT	SCT
22	SAURASHTRA & KUTCH	SCT	SCT	SCT	SCT	SCT	SCT	SCT
23	KONKAN & GOA	FWS	FWS	FWS	FWS	WS	WS	WS
24	MADHYA MAHARASHTRA	ISOL	ISOL	ISOL	ISOL	ISOL	SCT	SCT
25	MARATHWADA	ISOL	ISOL	ISOL	ISOL	SCT	SCT	SCT
26	VIDARBHA	SCT	SCT	SCT	SCT	SCT	SCT	FWS
27	CHHATTISGARH	FWS	FWS	SCT	SCT	SCT	SCT	SCT
28	COASTAL ANDHRA PRADESH	ISOL	ISOL	ISOL	SCT	SCT	SCT	SCT
29	TELANGANA	ISOL	ISOL	ISOL	ISOL	ISOL	SCT	SCT
30	RAYALASEEMA	ISOL	ISOL	ISOL	SCT	FWS	FWS	FWS
31	TAMILNADU & PUDUCHERRY	SCT	SCT	SCT	SCT	SCT	SCT	SCT
32	COSTAL KARNATAKA	WS	WS	WS	WS	WS	WS	WS
33	NORTH INTERIOR KARNATAKA	ISOL	ISOL	SCT	SCT	SCT	SCT	SCT
34	SOUTH INTERIOR KARNATAKA	SCT	SCT	FWS	FWS	FWS	FWS	FWS
35	KERALA AND MAHE	WS	WS	WS	WS	WS	WS	WS
36	LAKSHADWEEP	WS	WS	WS	WS	WS	WS	WS

- As the lead period increases forecast accuracy decrease.





- Action may be taken based on ORANGE AND REDCOLOUR warnings.
- Vulnerable regions likely urban and hilly areas action may be initiated for heavy rainfall warning.
- As the lead period increases forecast accuracy decreases.

Detailed districtwise Multi Hazard weather warning for next five days available at <https://mausam.imd.gov.in/responsive/districtWiseWarningGIS.php>

Weather forecast over Delhi/NCR during 01st to 04th August 2025

Past Weather:

There has been no significance change in the minimum temperature and fall in maximum temperature up to 2 - 3°C over Delhi/NCR during the past 24 hours. The maximum and minimum temperatures over Delhi were around 29 to 30°C and 23 to 26°C respectively. The minimum temperature was below normal up to 1 - 3°C and the maximum temperature was below normal up to 4 - 6°C. Generally cloudy sky conditions with predominant surface wind from the southwest direction with wind speeds up to 18 kmph prevailed during the past 24 hours. Light to moderate rainfall has been recorded in most places with isolated places heavy rainfall over Delhi. Generally cloudy sky conditions with a wind speed of less than 14 kmph from the southwest direction prevailed over the region in the forenoon today.

Weather Forecast:

01.08.2025: Generally cloudy sky. One or Two spells of light rain at most places with possibility of a moderate rain at isolated places accompanied with thunderstorms/lightning during evening/night. The maximum temperatures over Delhi are likely to be in the range of 32 to 34°C. The maximum temperature will be below normal up to 2 to 4°C. The predominant surface wind will likely be from the south direction with a wind speed of 10-15 kmph in the afternoon. The wind speed will gradually decrease becoming 05-10 kmph from the southwest direction during evening and night.

02.08.2025: Generally cloudy sky. Very light to light rain accompanied with thunderstorms/lightning. The maximum and minimum temperatures over Delhi are likely to be in the range of 34 to 36°C and 24 to 26°C respectively. The minimum temperature will be below normal up to 1 to 3°C and the maximum temperature will be above normal up to 1 to 2°C. The predominant surface wind will likely be from the west direction with a wind speed of 10-15 kmph during the morning hours. The wind speed will gradually increase becoming 15-20 kmph from the southwest direction in the afternoon. It will gradually decrease becoming 10-15 kmph from the southwest direction during the evening and night.

03.08.2025: Generally cloudy sky. Light to moderate rain accompanied with thunderstorms/lightning. The maximum and minimum temperatures over Delhi are likely to be in the range of 32 to 34°C and 24 to 26°C respectively. The minimum temperature will be below normal up to 1 to 3°C and the maximum temperature will be below normal up to 1 to 2°C. The predominant surface wind will likely be from the northwest direction with a wind speed of less than 10-15 kmph during the morning hours. The wind speed will gradually increase becoming 15-20 kmph from the southwest direction in the afternoon. It will gradually decrease becoming less than 15 kmph from the northeast direction during the evening and night.

04.08.2025: Generally cloudy sky. Very light to light rain accompanied with thunderstorms/lightning. The maximum and minimum temperatures over Delhi are likely to be in the range of 32 to 34°C and 23 to 25°C respectively. The minimum temperature will be below normal up to 2 to 4°C and the maximum temperature will be below normal up to 1 to 2°C. The predominant surface wind will likely be from the northeast direction with a wind speed of 10-15 kmph during the morning hours. The wind speed will gradually increase becoming 15-20 kmph from the east direction in the afternoon. It will gradually decrease becoming less than 15 kmph from the east direction during the evening and night.

Impact expected and Action Suggested due to light to moderate rainfall with thunderstorm/lightning:

- Be cautious and take precautionary measures, though there is the likelihood of thunderstorms/lightning.
- Damage to standing crops, Minor to major damage to power and communication lines due to breaking of branches, Partial damage to vulnerable structures due to strong winds, Loose objects may fly.
- People are advised to keep a watch on the weather for worsening conditions and be ready to move to safer places accordingly, stay indoors, close windows & doors and avoid travel if possible, take safe shelters; do not take shelter under trees, do not lie on concrete floors and do not lean against concrete walls, unplug electrical/ electronic appliances, immediately get out of water bodies, keep away from all the objects that conduct electricity.

Impact & Action Suggested due to

- ✓ **Extremely heavy rainfall** very likely at isolated places over Meghalaya, Sub-Himalayan West Bengal & Sikkim on 02nd & 03rd; Arunachal Pradesh and Bihar on 03rd August.
- ✓ **Very heavy rainfall** over Himachal Pradesh on 01st; East Rajasthan, West Uttar Pradesh on 04th; East Uttar Pradesh and Uttarakhand on 03rd & 04th; Tamil Nadu on 04th & 05th and Kerala & Mahe on 06th & 07th August

Impact Expected

- Localized Flooding of roads, water logging in low lying areas and closure of underpasses mainly in urban areas of the above region.
- Occasional reduction in visibility due to heavy rainfall.
- Disruption of traffic in major cities due to water logging in roads leading to increased travel time.
- Minor damage to kutcha roads.
- Possibilities of damage to vulnerable structure.
- Localized Landslides/Mudslides/landslips/mudslips/landsinks/mudsinks.
- Damage to horticulture and standing crops in some areas due to inundation.
- It may lead to riverine flooding in some river catchments (for riverine flooding please visit Web page of CWC)

Action Suggested

- Check for traffic congestion on your route before leaving for your destination.
- Follow any traffic advisories that are issued in this regard.
- Avoid going to areas that face the water logging problems often.
- Avoid staying in vulnerable structure.

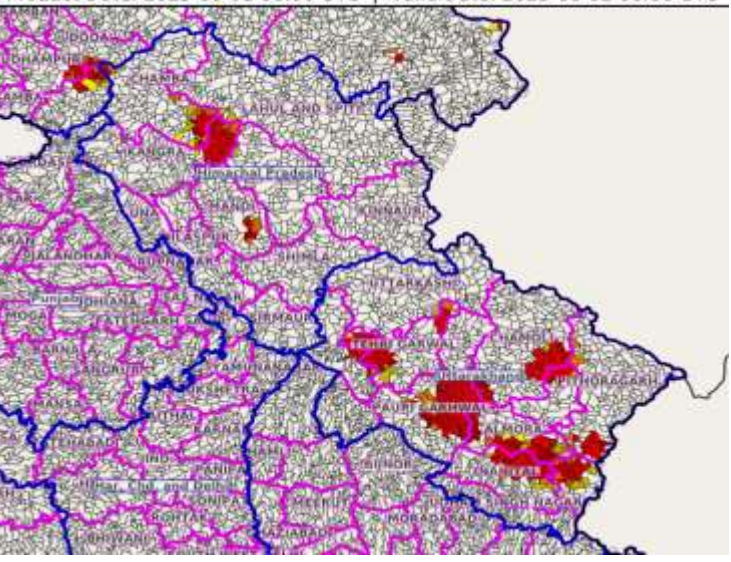
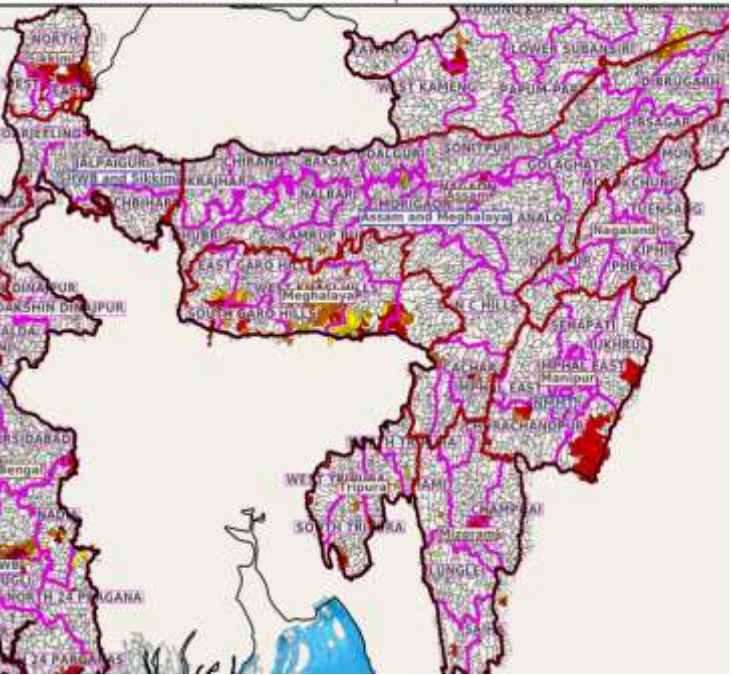
Agromet advisories for likely impact of Heavy / Heavy to Very Heavy / Extremely Heavy Rainfall

- In **Assam**, to avoid waterlogging ensure proper drainage in fields of jute and *Sali* rice in **Lower Brahmaputra Valley Zone**; *Sali* rice and sugarcane in **North Bank Plain Zone**; *Sali* rice fields and arecanut plantations in **Upper Brahmaputra Valley Zone**; *Sali* rice fields in **Barak Valley Zone** and *Sali* rice nurseries, fields of maize, jute, sugarcane, vegetables and transplanted *Sali* rice in **Central Brahmaputra Valley Zone**.
- In **Meghalaya**, avoid sowing of rice in nurseries especially in valley lands. Maintain proper drainage channels around the nursery beds. Make provision for draining out excess water from maize and vegetable fields and repair bunds in lowland paddy fields.
- In **Arunachal Pradesh**, postpone sowing of finger millet and fresh transplanting of rice (in low land) till cessation of heavy rains. Provide drainage in already sown fields of finger millet, maize and WRC rice.
- In **Mizoram**, harvest matured cobs of maize. Create strong bunds around rice fields to retain rainwater and reduce runoff.
- In **Bihar**, provide adequate drainage in the fields of paddy, pigeon pea, *kharif* maize, okra and plantations in **South Bihar Alluvial Zone**.
- In **West Bengal**, make proper arrangements for drainage in fields of rice, ginger, vegetables and fruit orchards in **Hill Zone** and vegetable beds, standing vegetable crops and betel gardens in **Coastal Saline Zone**.
- In **Uttarakhand**, maintain proper drainage channels in fields of rice in **Bhabar and Tarai Zone**, black gram in **Hill Zone** and rice, barnyard millet, finger millet and cucumber in **Sub Humid SubTropic Zone**.
- In **Himachal Pradesh**, provide drainage channels in low-lying areas in rice, maize, pulses and vegetables to prevent water stagnation in **Sub-Montane & Low Hills Sub-Tropical Zone**. Strengthen plant supports for creepers and tall vegetable crops (e.g., tomato, capsicum). In **High Hills Sub Temperate Wet Zone**, provide proper drainage channels in vegetables, maize, finger millets and kidney beans.

Livestock / Fishery

- Keep the animals inside the shed during heavy rainfall and provide them balanced feed.
- Store feed and fodder in a safe place to prevent spoilage.
- Construct an outlet with proper netting around the ponds to drain out excess water, thereby preventing fish from escaping in case of overflow.

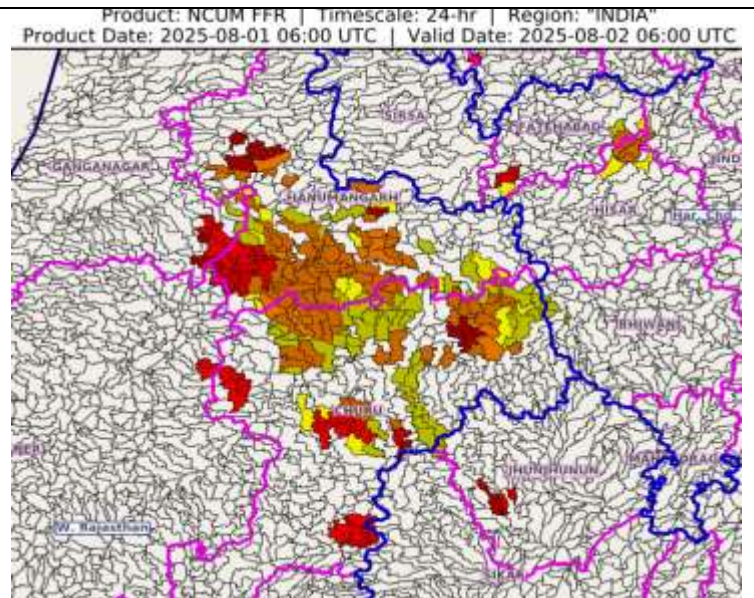
Flash flood guidance:

<p>24 hours Outlook for the Flash Flood Risk (FFR) till 1130 IST of 02-08-2025 :</p> <p>Low to Moderate flash flood risk likely over few watersheds & neighbourhoods of following Met Sub-divisions during next 24 hours.</p> <p>Himachal Pradesh - Chamba, Kinnaur, Lahul&Spiti and Mandi districts. Jammu & Kashmir & Ladakh - Doda, Kathua and Udhampur districts. Uttarakhand - Almora, Bageshwar, Chamoli, Champawat, Dehradun, Nanital, Pauri Garhwal, Pithoragarh, Rudrapur, Tehri Garwal and Uttarkashi districts.</p> <p>Surface runoff/ Inundation may occur at some fully saturated soils & low-lying areas over Area of Concern (AoC) as shown in map due to expected rainfall occurrence in next 24 hours.</p>	<p>Product: GFS FFR Timescale: 24-hr Region: "INDIA" Product Date: 2025-08-01 06:00 UTC Valid Date: 2025-08-02 06:00 UTC</p> 
<p>24 hours Outlook for the Flash Flood Risk (FFR) till 1130 IST of 02-08-2025 :</p> <p>Low to Moderate flash flood risk likely over few watersheds & neighbourhoods of following Met Sub-divisions during next 24 hours.</p> <p>Assam & Meghalaya - Cachar, Kamrup Rural, East Garo Hills, East Khasi Hills, North Garo Hills, Ri Bhoi, South Garo Hills, West Khasi Hills and Jaintia Hills districts. Nagaland - Mokokchung, Mon, Peren, Phek, Tuensang, Wokha, Zaski districts. Manipur - Chandel, Churachandpur, Imphal, Jiribam, Ukhrul, West Tripura districts. Mizoram - Aizawl, Serchhip districts. Tripura - South Tripura districts. Sub-Himalayan West Bengal & Sikkim - East Sikkim, North Sikkim, South Sikkim, West Sikkim and Darjeeling districts.</p> <p>Surface runoff/ Inundation may occur at some fully saturated soils & low-lying areas over Area of Concern (AoC) as shown in map due to expected rainfall occurrence in next 24 hours.</p>	<p>Product: NCUM FFR Timescale: 24-hr Region: "INDIA" Product Date: 2025-08-01 06:00 UTC Valid Date: 2025-08-02 06:00 UTC</p> 

24 hours Outlook for the Flash Flood Risk (FFR) till 1130 IST of 02-08-2025 :

Low to Moderate flash flood risk likely over few watersheds & neighbourhoods of following Met Sub-divisions during next 24 hours.
West Rajasthan - Churu, Ganganagar and Hanumangarh districts.

Surface runoff/ Inundation may occur at some fully saturated soils & low-lying areas over Area of Concern (AoC) as shown in map due to expected rainfall occurrence in next 24 hours.



Legends & abbreviations:

- ❖ **Heavy Rain:**64.5-115.5mm; **Very Heavy Rain:**115.6-204.4mm; **Extremely Heavy Rain:** >204.4mm.
- ❖ **Obsy:** Observatory; Automatic Weather Station; **ARG:** Automatic Rain Gauge; **dist:** District; **NH:** National Highway; **KVK:** Krishi Vigyan Kendra; **DVC:** Damodar Valley Corporation; **PTO:** Part Time Office, **Aero:** Aerodrome, **IAF:** Indian Air Force.
- ❖ **Region wise classification of meteorological Sub-Divisions:**
 - **Northwest India:** Western Himalayan Region (Jammu-Kashmir-Ladakh-Gilgit-Baltistan-Muzaffarabad, Himachal Pradesh and Uttarakhand); Punjab, Haryana-Chandigarh-Delhi; West Uttar Pradesh, East Uttar Pradesh, West Rajasthan and East Rajasthan.
 - **Central India:** West Madhya Pradesh, East Madhya Pradesh, Vidarbha and Chhattisgarh.
 - **East India:** Bihar, Jharkhand, Sub-Himalayan West Bengal & Sikkim; Gangetic West Bengal, Odisha and Andaman & Nicobar Islands.
 - **Northeast India:** Arunachal Pradesh, Assam & Meghalaya and Nagaland, Manipur, Mizoram & Tripura.
 - **West India:** Gujarat Region, Saurashtra & Kutch, Konkan & Goa, Madhya Maharashtra and Marathawada.
 - **South India:** Coastal Andhra Pradesh & Yanam, Telangana, Rayalaseema, Coastal Karnataka, North Interior Karnataka, South Interior Karnataka, Kerala & Mahe, Tamil Nadu, Puducherry & Karaikal and Lakshadweep.

LEGENDS

1. अंडमान और निकोबार द्वीपसमूह

2. अरुणाचल प्रदेश

3. असम और मेघालय

4. नागालैंड, मणिपुर, मिजोरम और त्रिपुरा

5. उप-हिमालयी पश्चिम बंगाल और सिक्किम

6. गंगीय पश्चिम बंगाल

7. ओडिशा

8. झारखंड

9. बिहार

10. पूर्वी उत्तर प्रदेश

11. पश्चिम उत्तर प्रदेश

12. उत्तराखंड

13. हरियाणा, चंडीगढ़ और दिल्ली

14. पंजाब

15. हिमाचल प्रदेश

16. जम्मू और कश्मीर और लद्दाख

17. पश्चिम राजस्थान

18. पूर्वी राजस्थान

19. पश्चिम मध्य प्रदेश

20. पूर्वी मध्य प्रदेश

21. गुजरात

22. सौराष्ट्र

23. कोंकण और गोवा

24. मध्य महाराष्ट्र

25. मराठवाड़ा

26. विदर्भ

27. छत्तीसगढ़

28. तटीय आंध्र प्रदेश और यनम

29. तेलंगाना

30. रायलसीमा

31. तमिलनाडु, पुडुचेरी और कराईकल

32. तटीय कर्नाटक

33. आंतरिक उत्तरी कर्नाटक

34. आंतरिक दक्षिणी कर्नाटक

35. केरल और माहे

36. लक्षद्वीप



1. Andaman & Nicobar Islands

2. Arunachal Pradesh

3. Assam & Meghalaya

4. Nagaland, Manipur, Mizoram & Tripura

5. Sub-Himalayan West Bengal & Sikkim

6. Gangetic West Bengal

7. Odisha

8. Jharkhand

9. Bihar

10. East Uttar Pradesh

11. West Uttar Pradesh

12. Uttarakhand

13. Haryana, Chandigarh & Delhi

14. Punjab

15. Himachal Pradesh

16. Jammu & Kashmir and Ladakh

17. West Rajasthan

18. East Rajasthan

19. West Madhya Pradesh

20. East Madhya Pradesh

21. Gujarat

22. Saurashtra

23. Konkan & Goa

24. Madhya Maharashtra

25. Marathwada

26. Vidarbha

27. Chhattisgarh

28. Coastal Andhra Pradesh & Yanam

29. Telangana

30. Rayalaseema

31. Tamilnadu, Puducherry & Karaikal

32. Coastal Karnataka

33. North Interior Karnataka

34. South Interior Karnataka

35. Kerala & Mahe

36. Lakshadweep

SPATIAL DISTRIBUTION (% of Stations reporting)

% Stations	Category	% Stations	Category
76-100	Widespread (WS/Most Places)	26-50	Scattered (SCT/A Few Places)
51-75	Fairly Widespread (FWS/Many Places)	1-25	Isolated (ISOL)



Fog



Heavy Snow



Cold Wave



Heavy Rain



Dust Storm



Cold Day



Very Heavy Rain



Heat Wave



Ground Frost



Extremely Heavy Rain



Warm Night



Thunder & Lightning



Hot Day



Hailstorm



Hot & Humid



Dust Raising Winds



Strong Surface Winds

COLOUR CODED WARNING

No Warning (No Action)

Watch (Be Aware)

Alert (Be Prepared To Take Action)

Warning (Take Action)

Probabilistic Forecast

Terms	Probability of Occurrence (%)
Unlikely	< 25
Likely	25 - 50
Very Likely	50 - 75
Most Likely	> 75

* Red colour warning does not mean "Red Alert", Red colour warning means "Take Action".

Forecast and Warning for any day is valid from 0830 hours IST of day till 0830 hours IST of next day.

For more details, kindly visit <https://mausam.imd.gov.in> or contact: 011-2434-4599

(Service to the Nation since 1875)

DEFINITION/CRITERIA

Rain/ Snow *

Heavy: 64.5 to 115.5 mm/cm *
Very Heavy: 115.6 to 204.4 mm/cm *
Extremely Heavy: > 204.4 mm/cm *

Heat Wave

When maximum temperature of a station reaches $\geq 40^{\circ}\text{C}$ for plains and $\geq 30^{\circ}\text{C}$ for hilly regions
(a) Based on Departure from normal

Heat Wave: Maximum Temperature Departure from normal 4.5°C to 6.4°C .

Severe Heat Wave: Maximum Temperature Departure from normal $\geq 6.5^{\circ}\text{C}$

(b). Based on Actual maximum temperature

Heat Wave: When actual maximum temperature $\geq 45^{\circ}\text{C}$.

Severe Heat Wave: When actual maximum temperature $\geq 47^{\circ}\text{C}$.

(c). Criteria for heat wave for coastal stations

When maximum temperature departure is $> 4.5^{\circ}\text{C}$ from normal. Heat Wave may be described provided maximum temperature $\geq 37^{\circ}\text{C}$.

Warm Night

When maximum temperature remains 40°C

Warm Night: When minimum temperature departure 4.5°C to 6.4°C .

Severe Warm Night: When minimum temperature departure $> 6.4^{\circ}\text{C}$.

Cold Wave

When minimum temperature of a station $\leq 10^{\circ}\text{C}$ for plains and $\leq 0^{\circ}\text{C}$ for hilly regions.

(a). Based on departure

Cold Wave: Minimum Temperature Departure from normal -4.5°C to -6.4°C .

Severe Cold Wave: Minimum Temperature Departure from normal $\leq -6.5^{\circ}\text{C}$

(b) Based on actual Minimum Temperature (for Plains only)

Cold Wave: When Minimum Temperature is $\leq 4.0^{\circ}\text{C}$

Severe Cold Wave: When Minimum Temperature is $\leq 2.0^{\circ}\text{C}$

(c) For Coastal Stations

When Minimum Temperature departure is $\leq -4.5^{\circ}\text{C}$ & actual Minimum Temperature is $\leq 15^{\circ}\text{C}$

Cold Day

When minimum temperature of a station $\leq 10^{\circ}\text{C}$ for plains and $\leq 0^{\circ}\text{C}$ for hilly regions

Based on departure

Cold Day: Maximum Temperature Departure from normal -4.5°C to -6.4°C .

Severe Cold Day: Maximum Temperature Departure from normal $\leq -6.5^{\circ}\text{C}$

Fog

Phenomenon of small droplets suspended in air and the horizontal visibility $< 1\text{km}$

Moderate Fog: When the visibility between 500-200 metres

Dense Fog: when the visibility between 50- 200 metres

Very Dense Fog: when the visibility < 50 metres

Thunderstorm

Sudden electrical discharges manifested by a flash of light (Lightning) and a sharp rumbling sound (thunder)

Dust/Sand Storm

An ensemble of particles of dust or sand energetically lifted to great heights by a strong and turbulent wind.

Frost

Ice deposits on ground

Air temperature $\leq 4^{\circ}\text{C}$ (over Plains)

Squall

A strong wind that rises suddenly, lasts for atleast 1 minute.

Moderate: Wind speed 52-61 kmph

Severe: Wind speed 62-67 kmph

Very Severe: Wind speed > 67 kmph

Sea State

Effect of various waves in the sea over specific area

Rough to very rough: Wind speed 41-62 kmph (22-33 knots) & Wave height 2.5-6 metre

High to very high: Wind speed 63-117 kmph (34-63 knots) & Wave height 6-14 metre

Phenomenal: Wind speed > 117 kmph (> 63 knots) & Wave height > 14 metre

Cyclone

Cyclonic Storm: Wind speed 62-87 kmph (34-47 knots)

Severe Cyclonic Storm: Wind speed 88-117 kmph (48-63 knots)

Very Severe Cyclonic Storm: Wind speed 118-165 kmph (64 - 89 knots)

Extremely Severe Cyclonic Storm: Wind speed 166-220 kmph (90 -119 knots)

Super Cyclone Storm: Wind speed > 220 kmph (> 119 knots)

* Red colour warning does not mean "Red Alert", Red colour warning means "Take Action".

Forecast and Warning for any day is valid from 0830 hours IST of day till 0830 hours IST of next day.

For more details, kindly visit <https://mausam.imd.gov.in> or contact: 011-2434-4599

(Service to the Nation since 1875)

Hot and Humid: When maximum temperatures remain 3°C above normal along with the above normal relative humidity.